

THIS INSTRUMENT PREPARED BY:  
MICHAEL D. ROSE, P.S.M.

SHEET 4 OF 5 SHEETS

# PARKSIDE TOWNHOMES AT DELRAY

A REPLAT OF A PORTION OF TRACTS 24, 25 AND 26, MODEL  
LAND COMPANY'S SUBDIVISION OF THE NORTH HALF AND PART OF  
THE SOUTH HALF OF SECTION 18, TOWNSHIP 46 SOUTH, RANGE 43 EAST,  
(PLAT BOOK 6, PAGE 51, PALM BEACH COUNTY RECORDS)  
CITY OF DELRAY BEACH, PALM BEACH COUNTY, FLORIDA

# 120

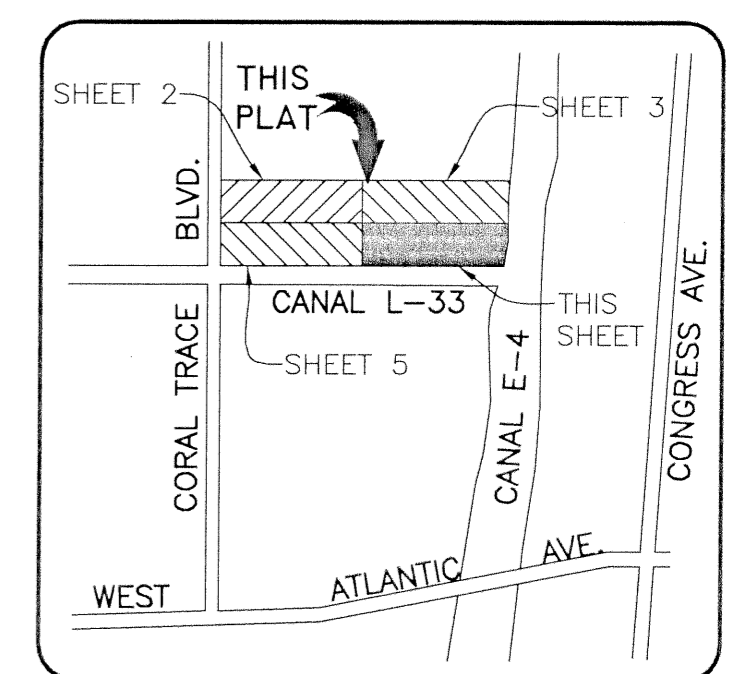
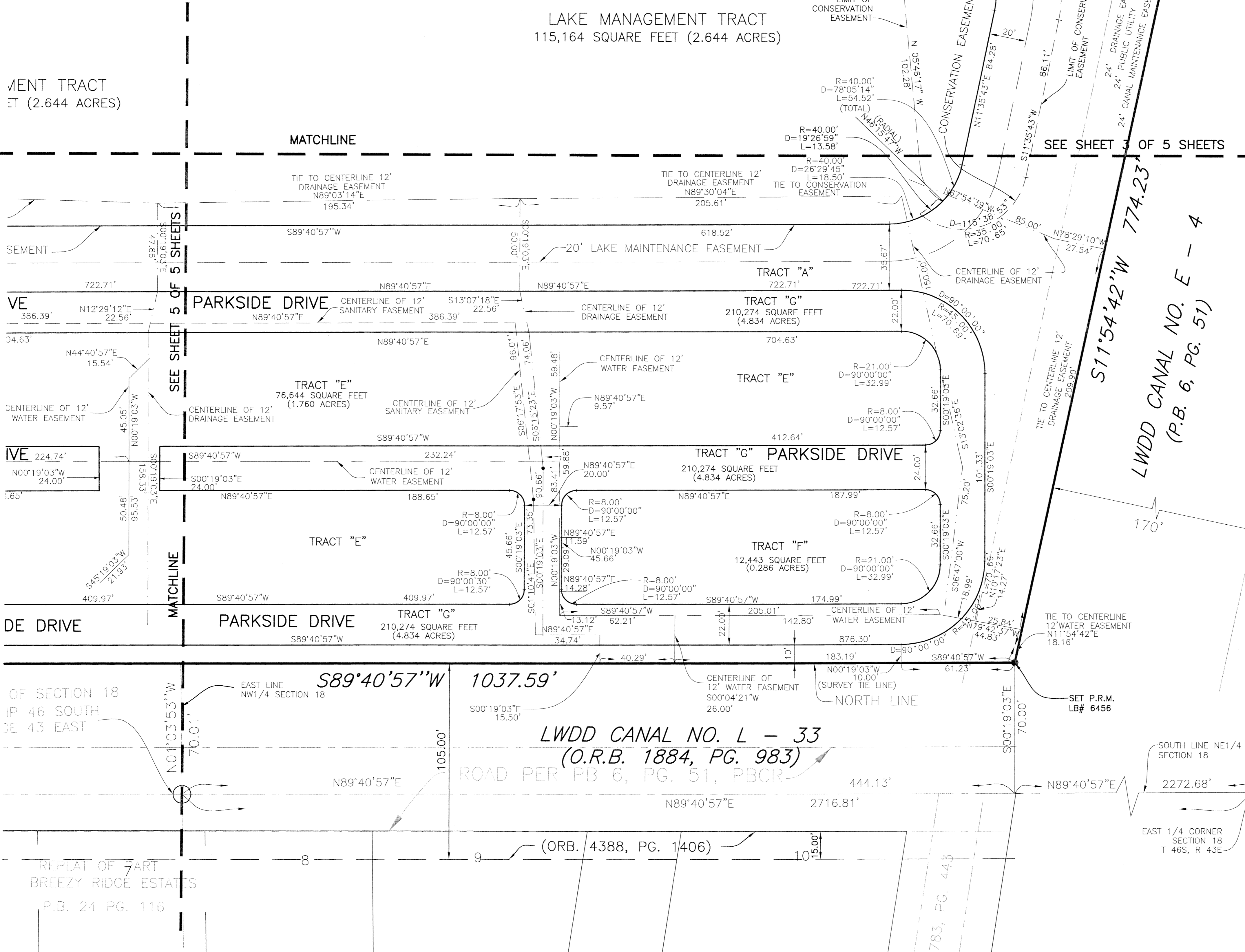
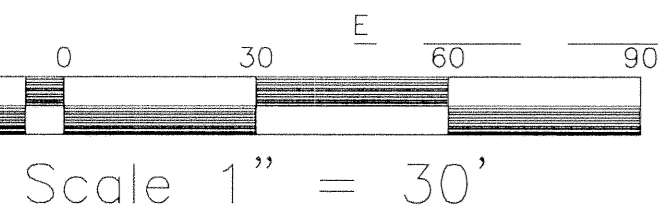
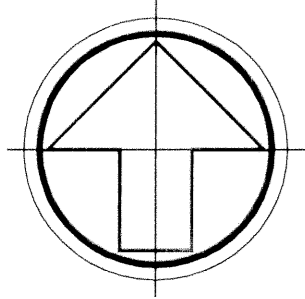
STATE OF FLORIDA SS  
COUNTY OF PALM BEACH

This Plat was filed for record  
at \_\_\_\_\_ M., this \_\_\_\_\_ day  
of \_\_\_\_\_, 200\_\_\_\_ and duly  
recorded in Plat Book No. \_\_\_\_\_  
on Pages \_\_\_\_\_ and \_\_\_\_\_

DOROTHY H. WILKEN, CLERK

BY: \_\_\_\_\_ DC

**SDA** SHAH DROTOS & ASSOCIATES  
ENGINEERING SURVEYING PLANNING  
CERTIFICATE OF AUTHORIZATION NO. LB6456  
1885 W. Commercial Blvd., Suite 190 • Ft. Lauderdale, FL 33309  
PH: 954-776-7604 • FAX: 954-776-7608  
JUNE, 2000



LOCATION MAP  
NOT TO SCALE

- LEGEND:
- P.R.M. = PERMANENT REFERENCE MARKER
  - GRND. = GROUND
  - P.C.P. = PERMANENT CONTROL POINT
  - SQ. = SQUARE
  - FT. = FEET
  - D = DELTA
  - R = RADIUS
  - L = ARC LENGTH
  - CH = CHORD
  - CL = CHORD LENGTH
  - D.E. = DRAINAGE EASEMENT
  - U.E. = UTILITY EASEMENT
  - L.S.E. = LIFT STATION EASEMENT
  - L.S.A.E. = LIFT STATION ACCESS EASEMENT
  - N = 802633.75
  - E = 948233.87
  - P.B.C.R. = STATE PLANE COORDINATES
  - O.R.B. = PALM BEACH COUNTY RECORDS
  - PG. = OFFICIAL RECORD BOOK
  - P.B. = PAGE
  - T 45 = TOWNSHIP
  - R 42 = RANGE
  - LWDD = LAKE WORTH DRAINAGE DISTRICT
  - P.C. = POINT OF CURVATURE
  - P.T. = POINT OF TANGENCY